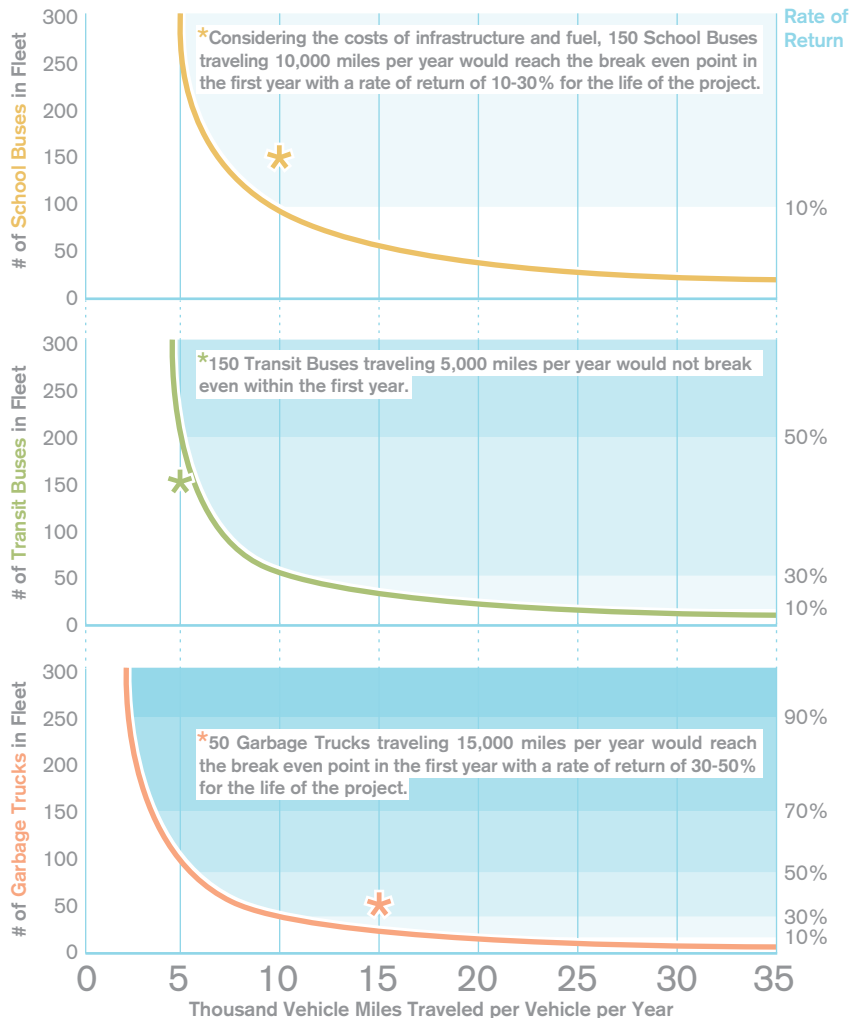


The Flux Report™

Natural Gas Vehicles Edition, 2011

What is the Rate of Return on a fleet of Natural Gas Vehicles*?

ROR 0-10% 10-30% 30-50% 50-70% 70-90% 90+% Break Even



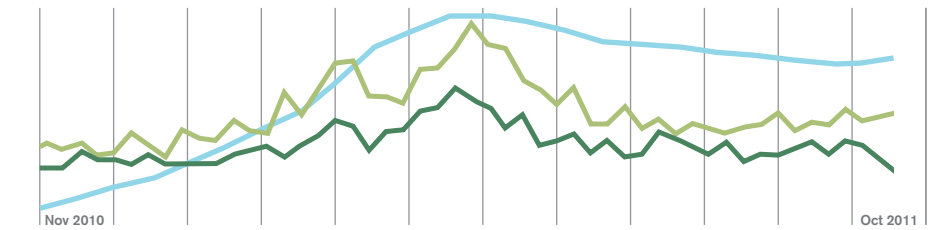
*using compressed natural gas Source: Business Case for Compressed Natural Gas in Municipal Fleets, NREL/TP7A247919, June 2010

Top 5 Consumer Concerns about Natural Gas Vehicles

- 1 Fuel Storage
- 2 Infrastructure for Delivery and Distribution at Fueling Stations
- 3 Safety
- 4 Conversion Costs
- 5 Availability of OEM Produced NGVs

Source: Wikipedia

Relative Search Volume for Compressed Natural Gas vs. Natural Gas Vehicle



Relative search volume over one year U.S. Diesel Prices

Source: Google, DOE

Top Related Search Terms For "Natural Gas Vehicle"

advanced advocacy alternative america auto automobiles awarded
background basic bringing california center civic civic-gx civic-
natural-gas civic-sedan cng cngvp coalition consulting contract
conversions corporation cost data dedicated doe efficiency environmentally expanding
forum friendly fuel-efficient fueling honda howstuffworks idea
information infrastructure ngv ngvi official partnership promoting
provider services station technical training use

Size of terms indicates the relative search volume

Source: Google